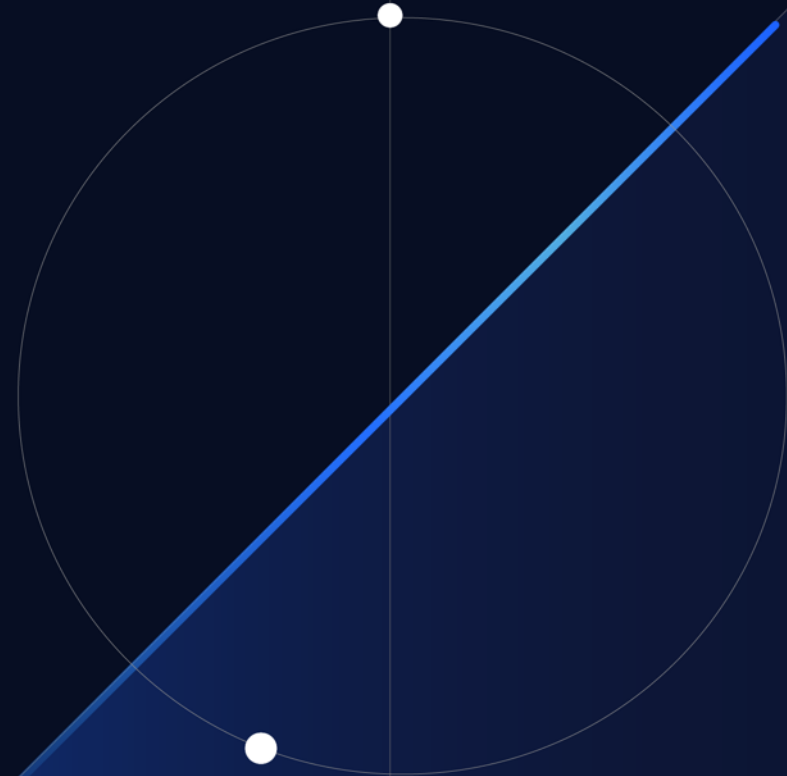




# Product Spotlight: Xeneta 360

Oct 25, 2023

Katherine Barrios, CMO, Xeneta  
Patrik Berglund, CEO, Xeneta  
Sarah Oliver, VP Product, Xeneta

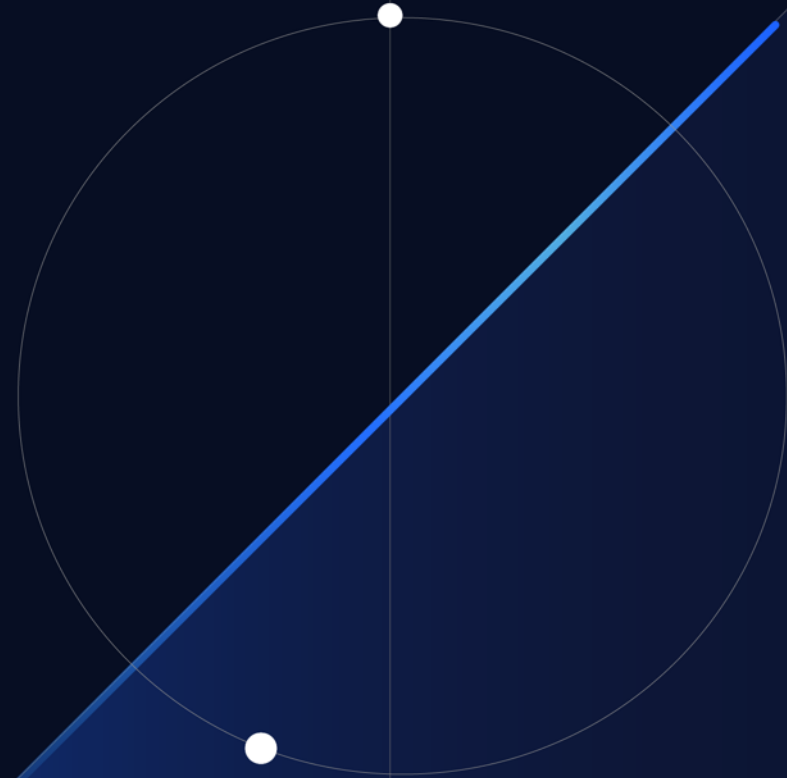




# CONFIDENTIAL – NOT FOR DISTRIBUTION

Permitted Use of Xeneta Data and Analysis by Xeneta Customers:

<https://www.xeneta.com/summit/data-guidelines>





**XENETA**  
**SUMMIT**



INTUITIVE

HARMONIZED

ACTIONABLE  
INSIGHTS  
INSTANTLY.

TRUSTWORTHY  
DATA

SIMPLICITY





WHOLE. NEW.

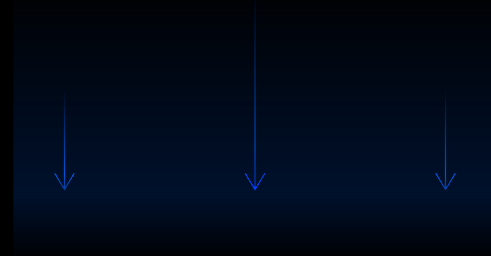
WHOLE. NEW. LIGHT.

A thin, light blue arc is positioned at the top of the page, curving downwards from the left towards the right, framing the top of the text.

**XENETA**

360

FROM ISOLATED DATA



FROM ISOLATED DATA



**TO HARMONIZED CONTEXT**

FROM STANDALONE SCENARIOS



FROM STANDALONE SCENARIOS



**TO AN ALL-ENCOMPASSING SOLUTION**



FROM SEPARATE TREND GRAPHS



FROM SEPARATE TREND GRAPHS

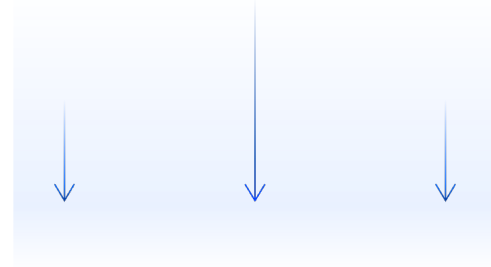


**TO COMBINED CHART DISPLAYS**

# FROM GENERAL MARKET OVERVIEWS



FROM GENERAL MARKET OVERVIEWS



**TO TAILORED INSIGHTS FOR YOU**

**XENETA**

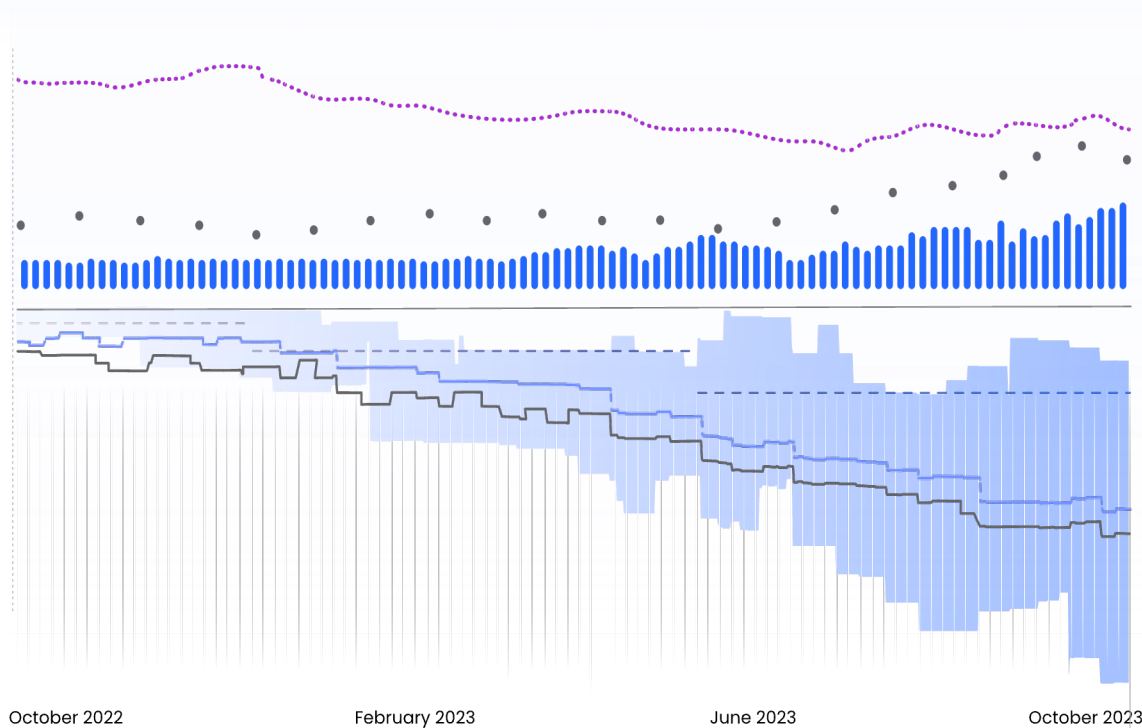
360

# XENETA 360

## Monitor 360

○ Shanghai (CNSGH)

📍 Rotterdam (NLRTM)



## Metrics

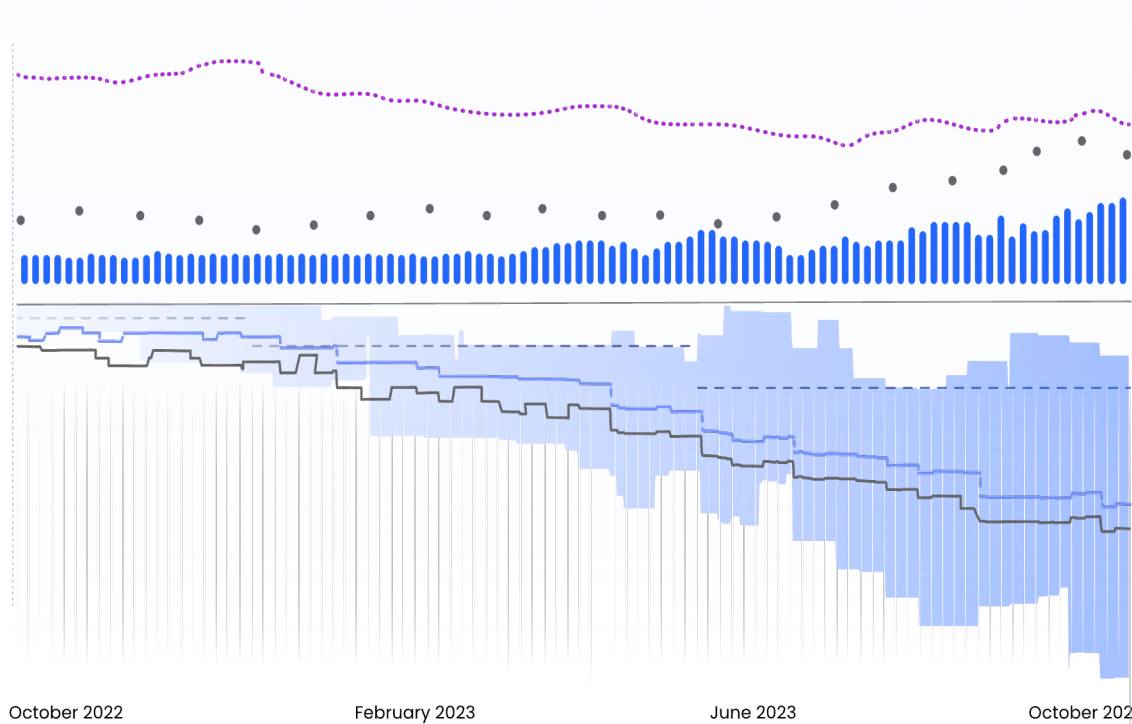
Carbon Emission Index	92.4
Schedule Reliability	66.9%
Offered Capacity	311 156 TEU
My Rate	\$ 2200
Market Average	\$ 1892
Carrier Average	\$ 1845

# XENETA 360

## Monitor 360

○ Shanghai (CNSGH)

📍 Rotterdam (NLRTM)



## Metrics

Carbon Emission Index	92.4
Schedule Reliability	66.9%
Offered Capacity	311 156 TEU
My Rate	\$ 2200
Market Average	\$ 1892
Carrier Average	\$ 1845

SIMPLE



FIND

UNDERSTAND

ACT

**400**

MILLION  
CONTRACT  
RATES

**160k**

PORT  
TO PORT  
PAIRS

**40k**

AIRPORT  
TO AIRPORT  
PAIRS

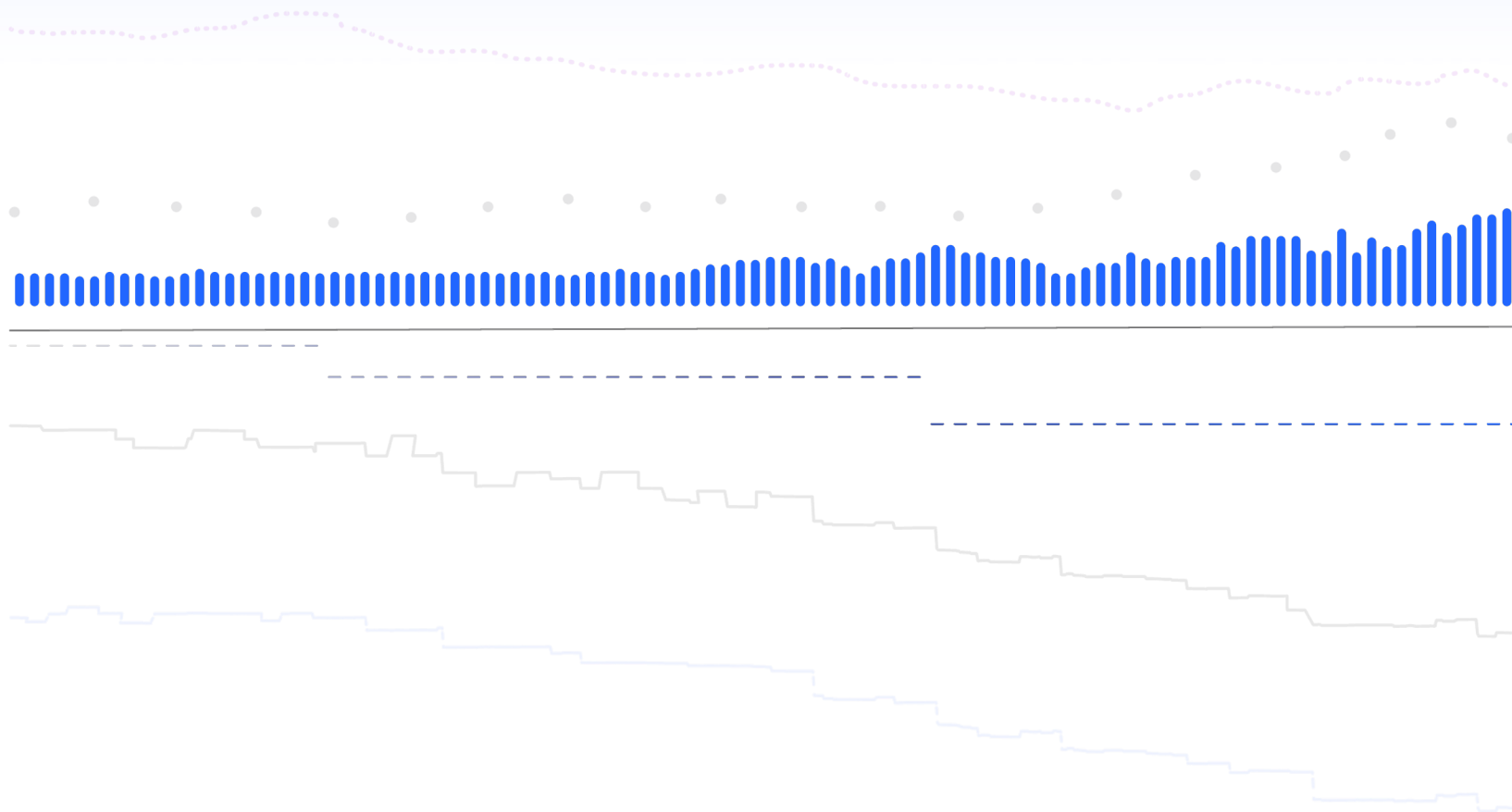
TRUSTWORTHY

# XENETA 360

## Monitor 360

○ Shanghai (CNSGH)

📍 Rotterdam (NLRTM)



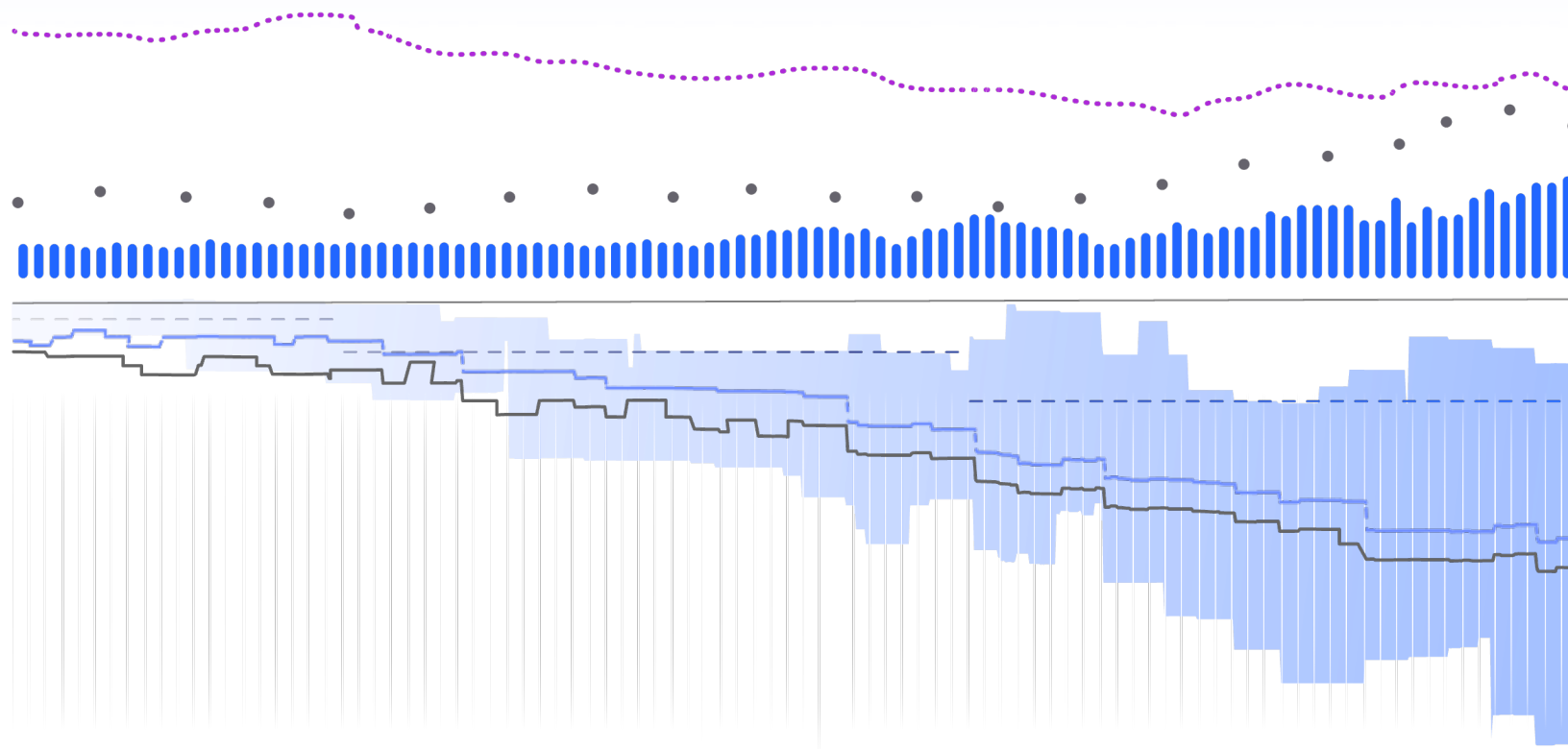
# XENETA 360

## HARMONIZED DATASETS

Monitor 360

○ Shanghai (CNSGH)

📍 Rotterdam (NLRTM)



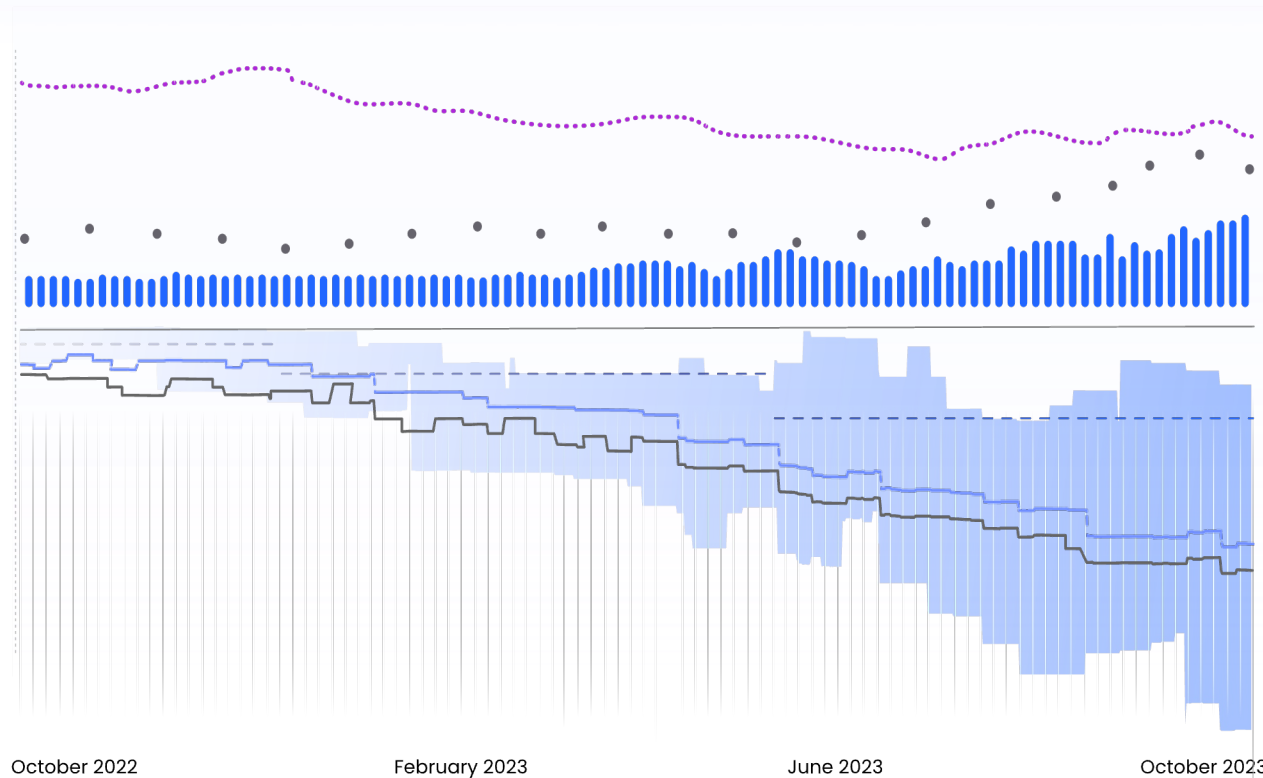
# XENETA 360

## HARMONIZED DATASETS

### Monitor 360

○ Shanghai (CNSGH)

📍 Rotterdam (NLRTM)



### Metrics

Carbon Emission Index	92.4
Schedule Reliability	66.9%
Offered Capacity	311 156 TEU
My Rate	\$ 2200
Market Average	\$ 1892
Carrier Average	\$ 1845

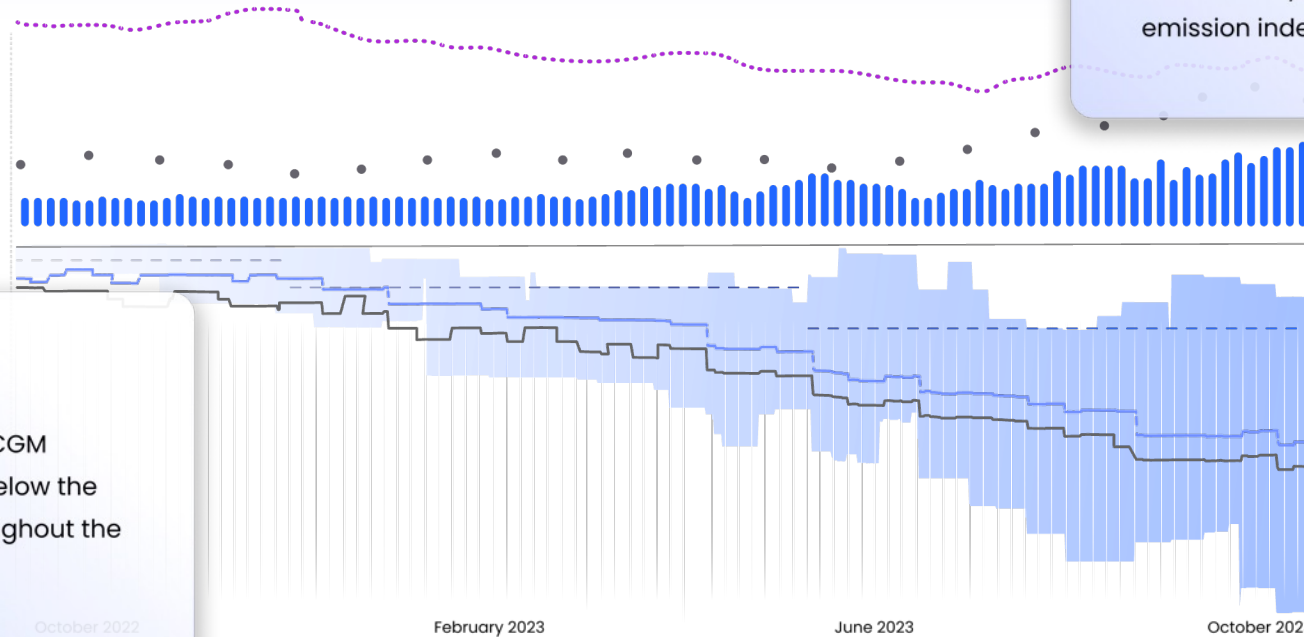
# XENETA 360

## ACTIONABLE INSIGHTS

### Monitor 360

○ Shanghai (CNSGH)

○ Rotterdam (NLRTM)



### Highlight

Market rates in the past year dropped by 83% while capacity increased by 9% and carbon emission index by 21%

### Insight

Your rates with CMA CGM continue to remain below the Market Average throughout the current quarter.

October 2022

February 2023

June 2023

October 2023

# XENETA 360

## REALIZE VALUE AT SPEED

**Rotterdam (NLRTM), Hamburg (DEHAM)** X

Destination ↕

**North Europe**  
4,780K Data Points ^

- Rotterdam NLRTM  
3,248K Data Points
- Hamburg DEHAM  
2,972K Data Points

**West Europe**  
5,290K Data Points v

**East Europe**

**Presets**

- 40' Standard Dry Container v
- Average Market v
- Long term – 6 months Contracts v
- Default THC v

**View Trend**

**Watch List**

TPacific (USW – FE) \$ 1,388 MoM 0.94% ↘	Shanghai – Rotterdam \$ 1,091 MoM 0.91% ↗	Hamburg – Ningbo \$ 1,091 MoM 0.91% ↗	Hamburg – New Jers \$ 1,091 MoM
---	--	--	------------------------------------

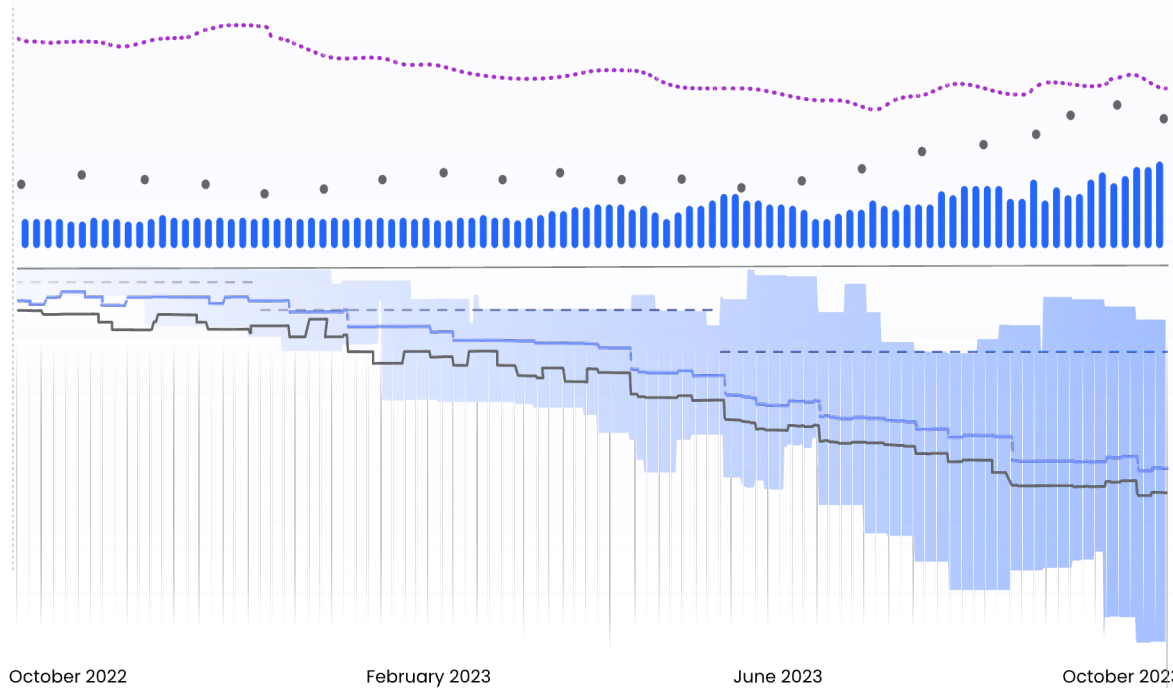


# XENETA 360

## Monitor 360

○ Shanghai (CNSGH)

📍 Rotterdam (NLRTM)



### Metrics

Carbon Emission Index	92.4
Schedule Reliability	66.9%
Offered Capacity	311 156 TEU
My Rate	\$ 2200
Market Average	\$ 1892
Carrier Average	\$ 1845

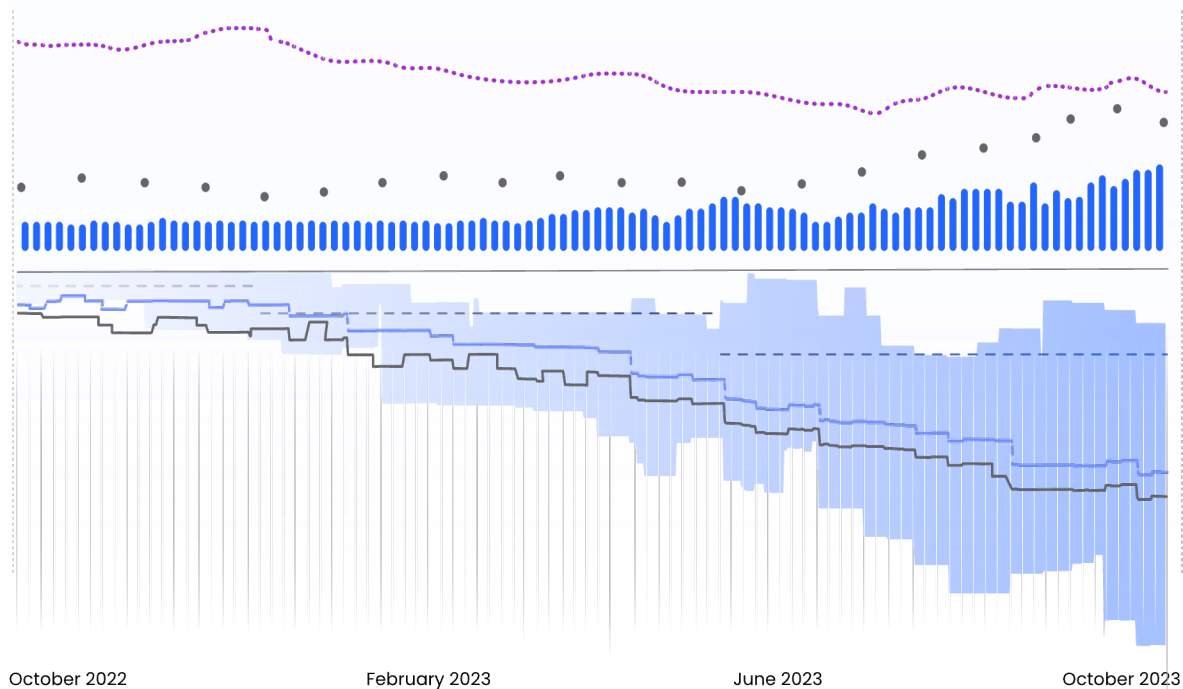
# XENETA 360

STARTING Q1 2024

## Monitor 360

○ Shanghai (CNSGH)

📍 Rotterdam (NLRTM)



## Metrics

Carbon Emission Index	92.4
Schedule Reliability	66.9%
Offered Capacity	311 156 TEU
My Rate	\$ 2200
Market Average	\$ 1892
Carrier Average	\$ 1845

A thin, light blue arc is positioned at the top of the page, curving downwards from the left towards the right, framing the top of the text.

**XENETA**

360



**XENETA**  
**SUMMIT**